



Please put yourself on mute!

Nissan State Age COVID-19 Safety Meeting

Sunday 20 September 4pm and Monday 21 September 6pm, 2020

Agenda

- Quick Introduction
- Mud Map
- COVID-19 Event Plan
 - o Spectators
 - o Safe Environment Strategies
 - o Competition
 - o Venue
- Questions and Answers



1



Acknowledgement of Country



2



COVID-19 Event Plan

- Long negotiation process - high Risk Category 2 Event
- Looks and feels different to what we're familiar with
- Over 50 pages long - we have simplified to discuss what will directly impact you
- No room for negotiation - we have fought hard and landed in best possible position
- PHU presence
- Don't compare to other sporting events
- Leave a legacy!

COVID SAFE EVENT PLAN 2020 NISSAN STATE AGE

The guidelines below have been put together with direction from QLD State Government, Netball Australia and the AIS to ensure safe a correct delivery of competitions.

Event Summary
 Nissan State Age: Saturday 20 September - Tuesday 23 September 2020
 Venue: Sunshine Coast Netball Association, 108 Fishermans Rd, Kuluin QLD 4558
 Attendees: Players, officials, staff, spectators, and coaches expected 25,000 across four days, up to 4000 patrons at any one time (including all staff, volunteers, officials, players, and spectators).
 Bump Out: 22nd September 2020
 Bump Out: 22nd September 2020
 COVID Safety Compliance Managers: Laura Rathgeber 0451 262 331 and Brianna Hall 0453 295 727
 Netball Queensland Website: <https://qld.netball.com.au/nissan-state-age>

Resource and Information:
 This document was designed in conjunction with QLD Sport and Recreation, Sunshine Coast Public Health Unit, Sunshine Coast Council and Sunshine Coast Netball Association, sourcing the most recent information available on return to sport and its application to netball. All current information can be accessed from the links below:

- COVID Safe Industry Plan - Field Sports
- Netball Queensland Community Resource Hub
- Netball Australia Competition/Venue Guidelines
- QLD Government
- AIS Framework for Rebooting Sport

3



COVID-19 Compliance Managers

- Brianna Hall 0483 295 727
- Laura Rathgeber 0451 262 331

Our Roles

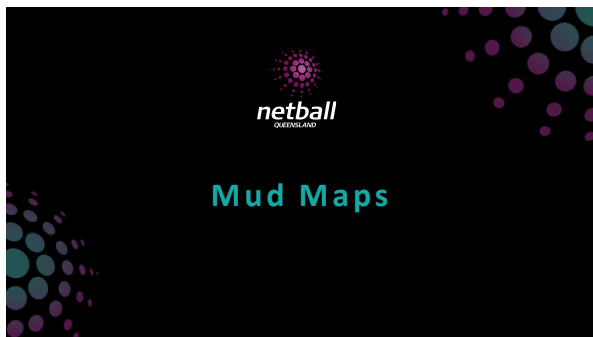
- Ensure COVID compliance measures are always adhered to
- Report to PHU, local authorities and Sport and Rec daily
- Monitor and review daily procedures
- Manage volunteers
- One of us will always be on-site

Your Roles

- Off the court we are one team, one community and have one goal - to keep the community safe!
- Work together, encourage each other and remind each other
- Lead by example and call out poor behaviour
- Be vigilant of signage and PA announcements



4



5



Mud Map



6

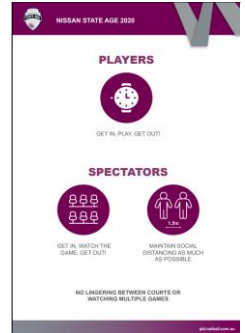


7



Spectators

- Spectators are welcome to attend 2020 Nissan State Age, however:
 - They must only watch the game of the player that they are attending for
 - Teams may not spectate or cheer on games of other teams within their Association
- Total attendance determined on average 1.6 spectator per player (based on previous history)
- Session capacity monitored by EVA check-in (if capacity reached, 1 in and 1 out process)
- Upon entering spectators will check-in using EVA check-in and receive a wristband for the session
- When leaving, spectators must check out and have wristband cut off (to allow others to enter the venue)



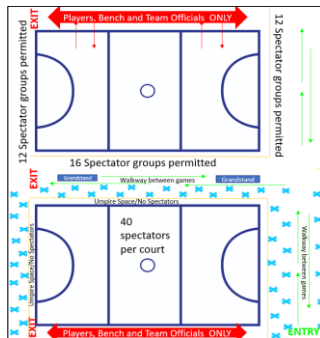
8



Spectators

Spectators per player

- Two spectators are permitted per player on each court.
- Both teams will be permitted a total of 20 spectators each, with a maximum of 40 people spectating on each court.



9



Spectators – Managing Courts

- Each court will have a court marshal and **two Team Managers** to monitor spectator numbers
- Matches will not start if spectator numbers are exceeded on any court
- There is an escalation process including penalties or even expulsion if there are continued issues
- Spectators must leave the court space immediately after the conclusion of the game or 1 minute after the conclusion of the game depending on the court.
- PA announcements, volunteer marshals, Netball Queensland staff, umpires, and all Team Managers are responsible for ensuring crowds are moved on safely.
- Game start and finish times have been staggered to assist in the movement of teams and spectators to prevent co-mingling and crossover of teams.
- Patrons who purchase food from vendors must be seated whilst eating or drinking in the chill out zone or picnic tables, no eating may occur whilst spectating a game courtside.

10



Spectators - Pathways

Pathway flows will be implemented to ensure traffic is all moving in the same direction and using a separate exit point to the entry point. This will be marked with signage and using white tape.



11

Spectators Exiting the Courts

- Spectators will be managed and advised to exit the court area in sections:
 - Courts 1 – 4 and 15 – 20 must vacate the courts immediately after the conclusion of the game
 - Courts 5 – 8 and 9 – 14 must vacate the courts 1 minute after the conclusion of the games
- Court Marshals, Team Managers and PA system will be utilised to manage people leaving the courts to mitigate co-mingling.



12



Spectators

Adverse Weather Conditions

- If weather conditions are grounds for a delay or suspension in play:
 - Players will be advised to remain in Tent City
 - Parents will be advised to remain socially distanced in an appropriate area until weather clears
 - Spectators will be requested to return to their vehicle or transportation
 - Any patrons that do not have access to any of the above, will be able to wait it out under the coverage of the SCNA Competitions Office and AFL Building Offices, to ensure that social distancing is still maintained.



13



Hygiene Practices

- If they are showing any of the following symptoms you must stay home:
 - Fever
 - Cough
 - Sore throat
 - Shortness of breath
 - Runny nose
 - Fatigue
- Attendees will not be permitted to attend the event if (disclaimer captured using QR Code EVA Check-In):
 - You have been in close contact with a person who is positive for COVID-19.
 - You are positive for COVID-19.
 - You have travelled overseas or to a declared COVID-19 hotspot in the previous 14 days.

14



Hygiene Practices



15



Breach of COVID Safe Event Plan

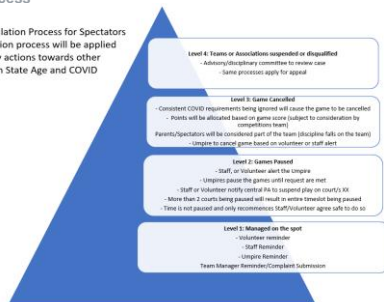
A breach of the COVID Safe Event Plan or COVID safe practice is defined as any protocol, rule or principle outlined in this document and by relevant Queensland Government legislation that is broken by any patron attending 2020 Nissan State Age. Any behaviour which does not align with these policies or any patrons who fail to comply will be reported by the general public, Team Managers, volunteers, NQ staff and event staff directly to the COVID Compliance Manager whose details will be included in all Event Information Packs, Team Manager Briefings and signage around the venue.

- Once a breach has been reported to the COVID Compliance Manager via phone or radio, they will attend the site of the reported incident to speak with the offending suspect.
- Contact details will be recorded, and the incident reported in a COVID-19 breach log
- If any breaches present a major risk to the community, Queensland Health will be notified of the incident depending on the severity of the incident
- Patrons may have up to two warnings reported against their name (this can be a minor warning)
- Any incident that is reported after their second warning, patrons will be asked to leave the venue immediately and will not be permitted to re-enter.

16

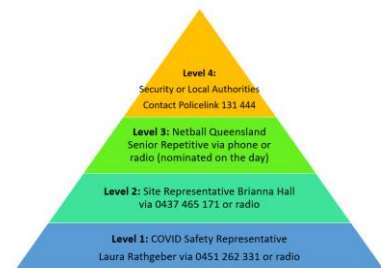
Escalation Process

Courtside Escalation Process for Spectators
- Same escalation process will be applied for disciplinary actions towards other areas of Nissan State Age and COVID requirements



17

Escalation Matrix



18



Volunteers

- Significant increase in number of resources required.
- On venue at anyone time includes:
 - 20 Netball Court Marshals
 - 16 Entry Attendants
 - 3 Chill Out Zone Attendants
 - 1 Warm-up Zone
 - 1 Tent City
- Please show your respect, educate your community, say thank you and be courteous to requests.

THANK YOU!

The most significant sign of gratitude is to do the right thing!

19



COVID-19 Safe Environment Strategies

20

Please adhere to:

- PA Announcements
- Signage
- Hygiene practices
- Ground Decals
- Line Marking
- Volunteer Directives



21



Compulsory Training

- All event staff, volunteers and **Team Managers** will be required to undertake [Australian Government online COVID training](#) prior to attending the event.

Whilst it states that this training is for the healthcare sector, it is available to anyone and contains the basics of COVID-19 infection control. Takes about 30 minutes to complete.



22

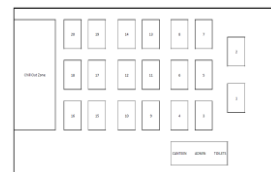


Competition

23

Staggered Game Times

- Each day will have two sessions with minimum 1.5 hour break
- Session will compose of 12s & 13s and 14s & 15s
- Games will be a staggered start split in to 8 courts and 12 courts
- Courts will have Crowd Control Barrier to keep separate
- Games will be 11-minute halves and 4-minute breaks to allow a game starting every 15 minutes.
- DO NOT arrive ahead of your game/session start time – if not playing first game come later

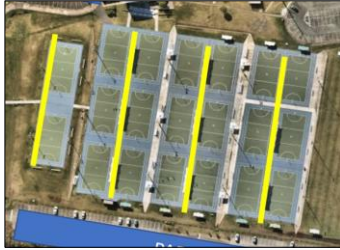


24



Players and Officials

Playing teams, coaches and officials will be allowed access to one side of courts (highlighted in yellow) and no spectators will be granted access to this space (see below).



25



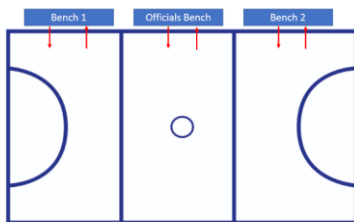
Players and Officials - Pathways



26



Players entering FOP



27



FOP Hygiene Procedures

- Each court will have a dedicated sanitiser bucket of wipes, bin and hand sanitiser (gloves and masks available).
- Umpires will be responsible for cleaning balls between games using alcohol sanitiser wipes and disposing in the bin provided (gloves and masks available).
- Each team will be responsible for cleaning a post pad each and their team bench at the end of each game using alcohol wipes.
- If a ball rolls onto court from another court, players are directed to gently kick the ball back rather than pick it up and throw it back.
- All players **MUST** use hand sanitiser before and after their game



28

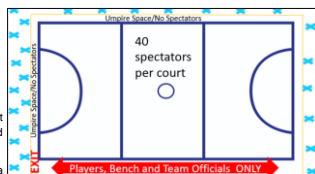


Injured Player

- At no time may a parent enter the field of play
- If a player is injured and unable to leave the court or is in a serious condition, a medic will be called to the court
- If a player is injured and able to leave the court, a parent must not enter the courtside player zone
- If the player can get themselves to the parent, the parent may take over care
- The responsibility is on the team to manage this process

Where to meet parents when leaving

- If a parent is collecting a player to leave, please meet at chill out zone or an agreed area away from the courts



29



30

Entry/Exit and Movement Between Zones

- The venue perimeter will be entirely fenced and every patron that enters the venue will be required to enter through four access points
- Spectators will register their attendance to the event via the EVA Check-in app and receive the relevant wristband for the session. We strongly recommend downloading the App and preload details prior to arriving at the venue
- Players don't need to check-in and will not receive a wristband
- Anyone from supporting Association (coach, umpire, president) to check-in and receive wristband
- Secondary venue entry points recognised below will open during peak times only (1 hour prior to session start times) and operated during busy periods.
- Movement between zones will be clearly signed, monitored by volunteers, event staff and NQ staff.
- A kiosk station will be set up for anyone without a phone or having trouble



31

32



Venue Ingress and Egress

- Access will only be granted to:
 - Teams – 1 hour prior to first game
 - Spectators – half hour before first game
- The fenced area will be entirely vacated of teams, players, coaches, officials, spectators, and team manager's in between session times:
 - Saturday: gap 1:15pm – 3:00pm
 - Sunday: gap 12:15 – 2:00pm
 - Monday: gap 1:15pm – 3:00pm
 - Tuesday: gap 12:00-1:45pm
- Towards the conclusion of session 1 and session 2, all teams that have played their final game for the day will be requested to vacate as soon as possible
- Correct pathways must be adhered to and all exit points will be open during the egress of patrons.
- No attendees will be allowed to enter the venue until the COVID Compliance Managers gives approval

33



Venue Ingress and Egress

Saturday		Monday	
Gates Open Players Session 1	7am	Gates Open Players Session 1	7am
Gates Open Spectators Session 1	7:30am	Gates Open Spectators Session 1	7:30am
Session 1 Commences	8am	Session 1 Commences	8am
Secondary Gate Closes	8:30am	Secondary Gate Closes	8:30am
Session 1 Concludes	1:15pm	Session 1 Concludes	1:15pm
Gates Open Players Session 2	2pm	Gates Open Players Session 2	2pm
Gates Open Spectators Session 2	2:30pm	Gates Open Spectators Session 2	2:30pm
Session 2 Commences	3pm	Session 2 Commences	3pm
Secondary Gate Closes	3:30pm	Secondary Gate Closes	3:30pm
Session 2 Concludes	7:30pm	Session 2 Concludes	7:30pm
Sunday		Tuesday	
Gates Open Players Session 1	7am	Gates Open Players Session 1	7am
Gates Open Spectators Session 1	7:30am	Gates Open Spectators Session 1	7:30am
Session 1 Commences	8am	Session 1 Commences	8am
Secondary Gate Closes	8:30am	Secondary Gate Closes	8:30am
Session 1 Concludes	12:15pm	Session 1 Concludes	12pm
Gates Open Players Session 2	1pm	Gates Open Players Session 2	12:45pm
Gates Open Spectators Session 2	1:30pm	Gates Open Spectators Session 2	1:15pm
Session 2 Commences	2pm	Session 2 Commences	1:45pm
Secondary Gate Closes	3:30pm	Secondary Gate Closes	2:15pm
Session 2 Concludes	6:45pm	Session 2 Concludes	5pm

34



QR Code and Contact Tracing



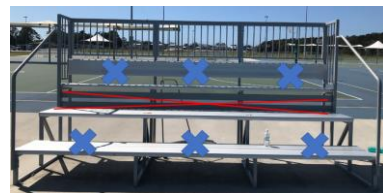
Players do not need to check-in, please wear dress to venue for access

35



Spectator Grandstand

- Spectator grandstands will be open, however social distancing must occur.
- The grandstands will be clearly marked with signage to maintain social distancing and every second row will be unavailable to sit.
- The grandstands will be monitored by staff, should for any reason Netball Queensland believe the grandstands have become unsafe or social distancing is not being maintained, the grandstands may be closed and barriered off.



36



Hydration Stations

- Hydration stations will not be available for Nissan State Age, water will be sold at the canteen and food vendors.
- You may bring hydration tubs however:
 - Only the **Team Manager** can refill bottles for players
 - No bottles where mouth directly contacts bottle opening



37



Picnic Tables

- Picnic tables will be spaced throughout Chill Out Zone. Each picnic table will have signage stating no more than 4 persons per table.
- Picnic Tables will each be equipped with alcohol wipes and signage
- Every person is to wipe down their seat and table upon departure ready for the next person to use.

Sunscreen Station

- Sunscreen stations will not be available at Nissan State Age 2020



38



Chill Out Zone

- 22 vendors on site – no seating within fenced area
- Max 190 people allowed at any time
- No Cash on site – cashless venue



39



Chill Out Zone

- No parent city - No BYO tents, chairs are welcome
- Chill Out Zone will be accessible by all patrons on-site but social distancing must always be adhered to as do other COVID safe measures.
- Chill out zone will have marquees for shade that can be utilised by parents



40



Player Tent City

- As per COVID Safe Industry Plan – Field Sports, spaces including tent city and change rooms are defined as the Field of Play:
 - There is no mixing of teams
 - There are no other persons (e.g. spectators) allowed in with active participants.
- Players are not to co-mingle with other teams and must always remain within their own allocated team space, physical distancing will be observed wherever possible
- No sharing of cut fruit or snacks, pre pack food where possible
- Food must be individually wrapped
- Absolutely no parents!!

No parent city in 2020



41



Warm Up and Down Areas

- There is a designated warm-up area on the AFL oval across from all the courts, this is outside the fenced area.
- Warm up areas are considered as part of the Field of Play, however social distancing rules will be adhered to for all players, coaches, and officials where possible.
- No spectators or parents will be granted access to the warm-up area, this entry/exit pint will be managed by a volunteer and anyone without a wristband (excluding playing group) will be advised to enter via the correct entry point.



42



43



44