



2022 Junior Nissan State Age Parent and Spectator Guide

Brought to you by



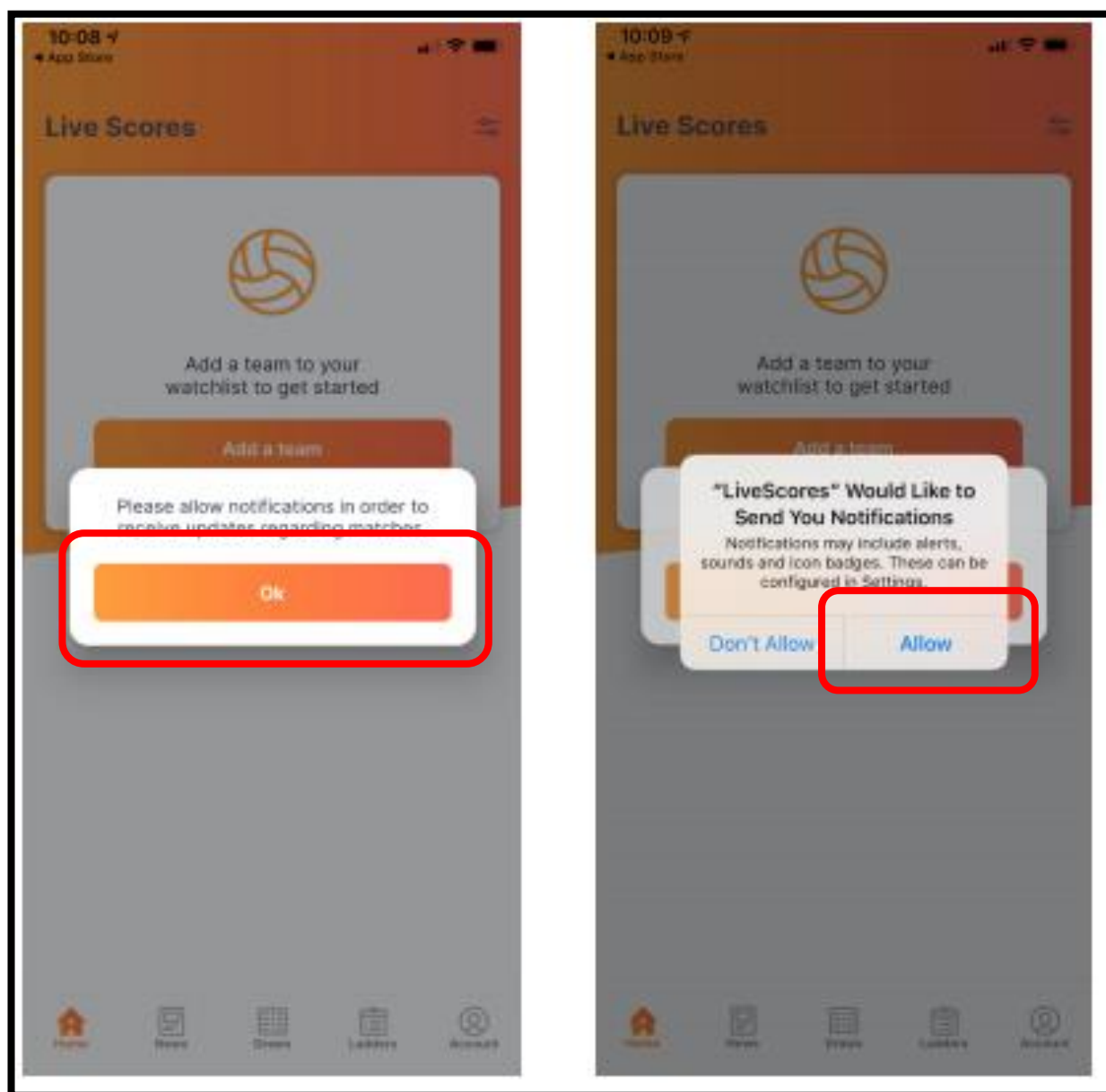
PARENT AND SPECTATOR GUIDE TO LIVESCORING

If you have not already done so, download the NetballConnect app:

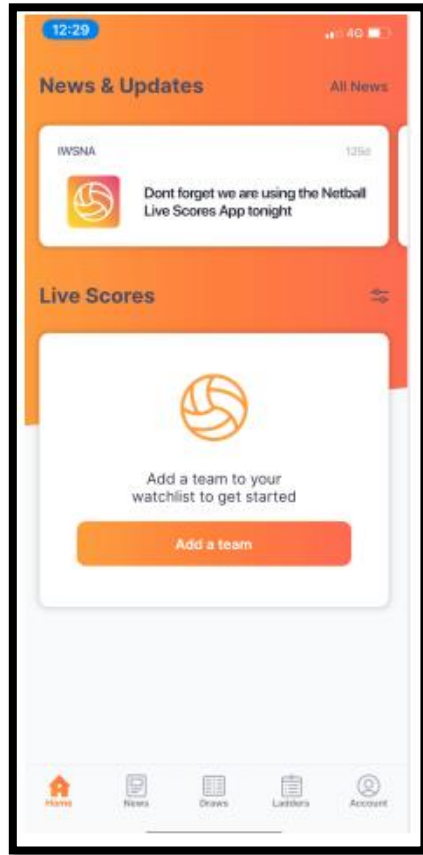
- Apple Store: <https://apps.apple.com/au/app/netballconnect/id1456225408>
- Google Play: <https://play.google.com/store/apps/details?id=com.wsa.netball>

HOME PAGE

- The screen below appears
- You will be asked to allow notifications. Click OK
- Another pop-up will appear which asks if you would like to receive push notifications from NetballConnect. Click ALLOW

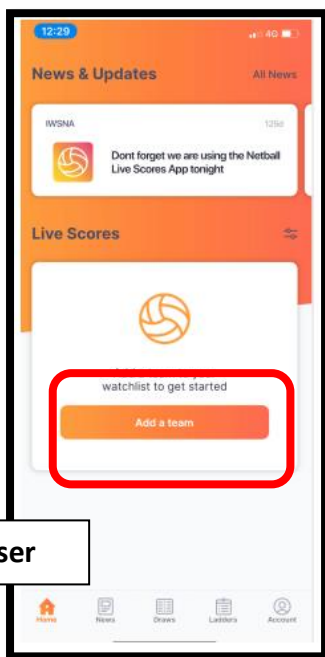


- The home page allows you to see News & Updates

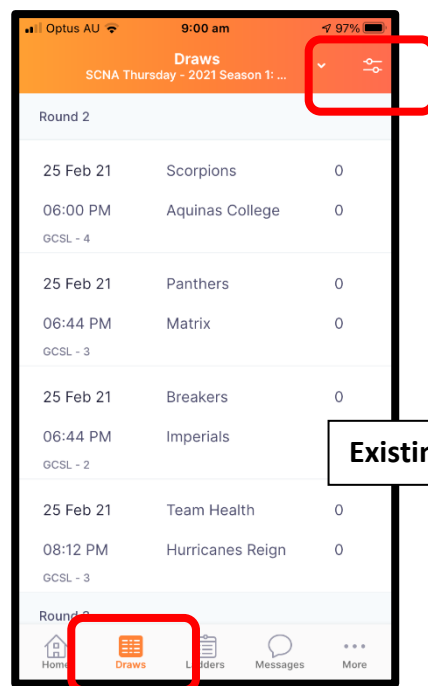


CHOOSING A TEAM TO WATCH

- Search for teams(s) you want to add to your watchlist (follow)
- New User: Select Add Team or Existing User: Select Draws > Top Icon



New User

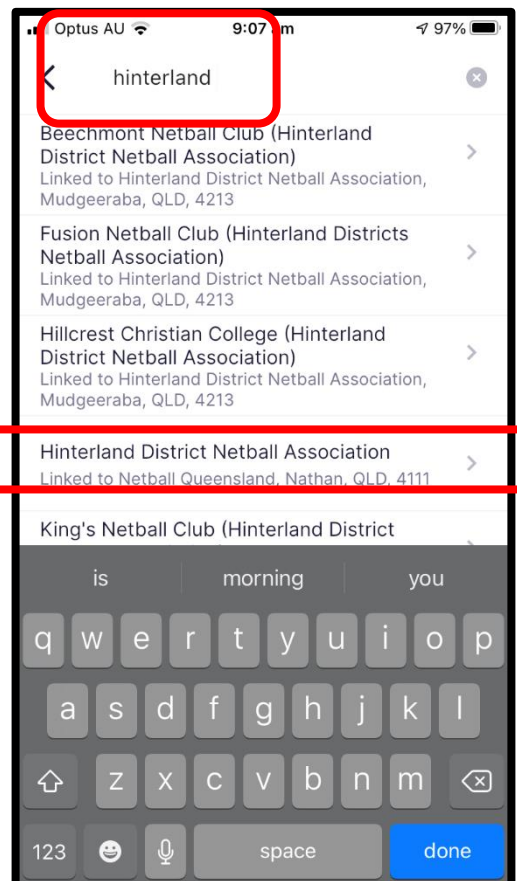
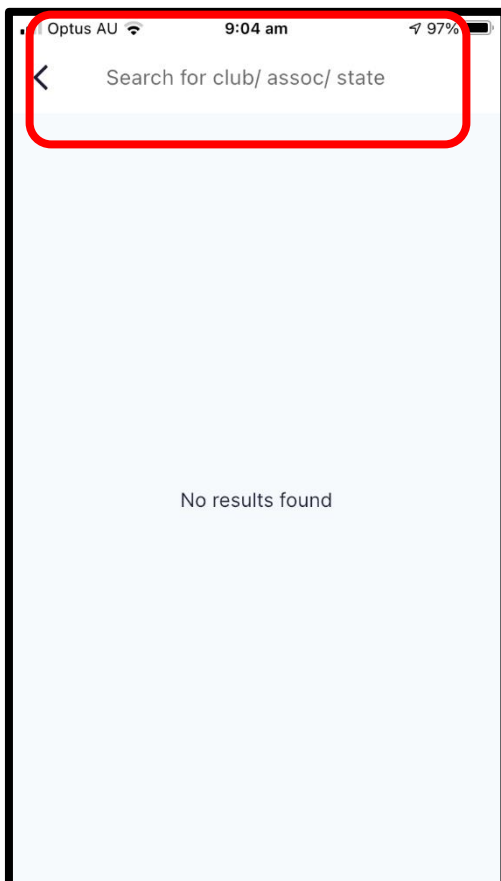


Existing User

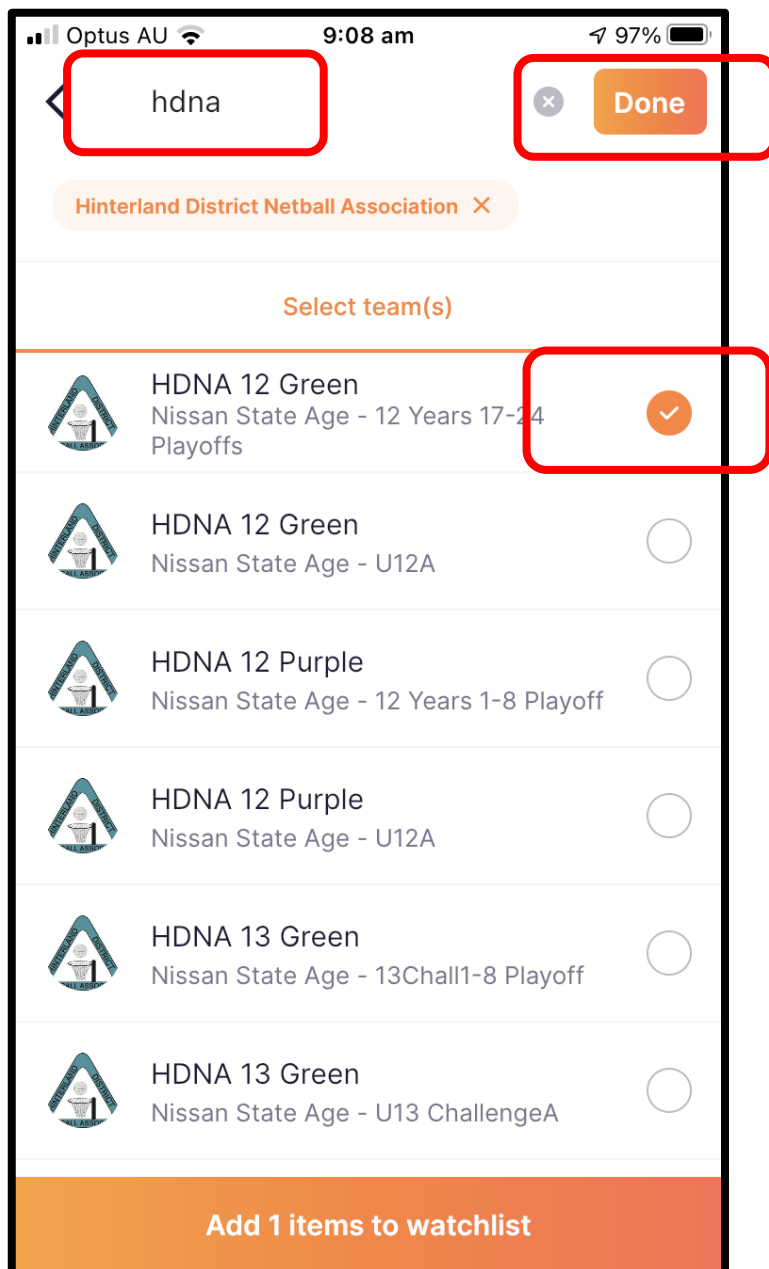
- Tap where it says Add Team



- Start typing your Association where it says Search for Club/Assoc/State
- Select your Associations

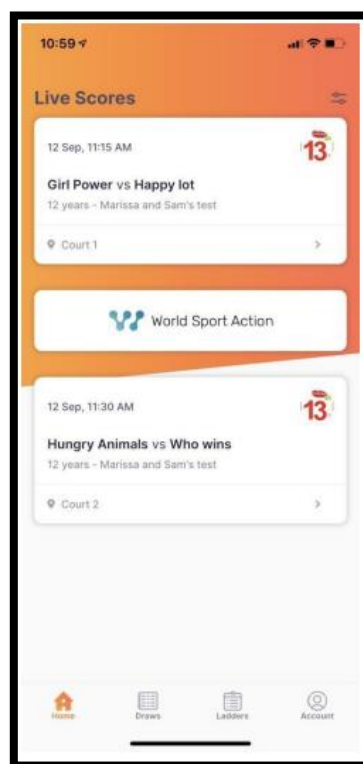


- Start typing the Team Name where it says Search for Team/Age Group
- Select your Team(s) on the right hand side (select multiple if required)
- Select DONE



WATCHING LIVE SCORES

- The Live Scores screen shows all the games on your watch list that are Live and starting soon (only the next two games)
- Scroll down the screen to see the details.



- Specific game details that are represented include:
 - How long until the game will be played
 - The date of the game
 - The court location

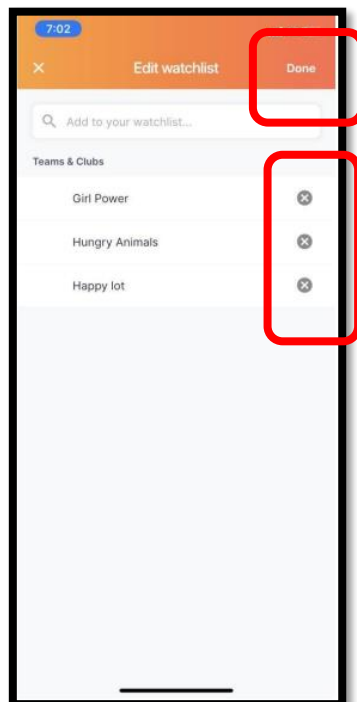
COURT LOCATION

- After you have clicked on the court location pin drop in the LiveScores screen, you will be redirected to Google Maps App. Please ensure that you set the screen to satellite view
- The pin drop icon shows the exact court location of the game you would like to watch and if you are not at the court already, it can also show you how to get there



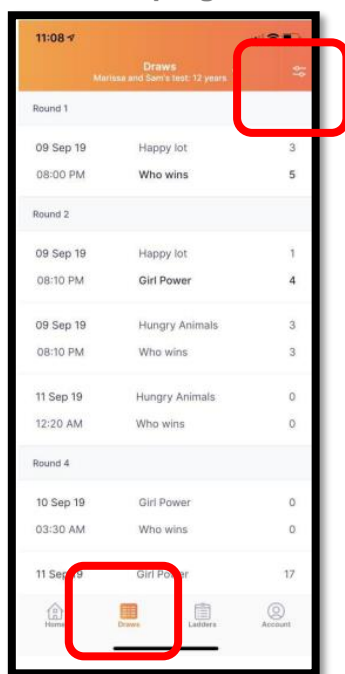
REMOVING A TEAM FROM YOUR WATCHLIST

- Click on Home, bottom left of the screen
- If you press Settings buttons in top right corner, you will be taken to the watchlist area which lists the Teams you have chosen to watch.
- You can choose to add or remove teams at any time by clicking the X
- Then press Done to return to the live scores screen



DRAW

- You can see your entire draw and the results of all of the other teams in your grade/division by clicking on the draw tab, bottom of screen
- If you would like to see the draw for another team make sure you update your watch list by clicking the icons in the top right hand corner



LADDER

- You can see Ladder for your grade/ division by clicking the Ladder Tab, bottom of screen
- Swipe your fingers right to left to see all the Ladder details
- If you would like to see the Ladder for another team make sure you update your watch list by clicking the icons in the top right hand corner

