



Dedicated to a better Brisbane

# EVACUATION DIAGRAM

56 Richardson St, Graceville, QLD 4075

## WHAT TO DO IN AN EMERGENCY

- / Remove yourself & nearby occupants from immediate danger
- / Make a final check of the room and shut the door
- / Raise the alarm, notify the Chief Warden and contact Emergency Services (000).
- / **If Evacuation is required commence Evacuation Procedure**

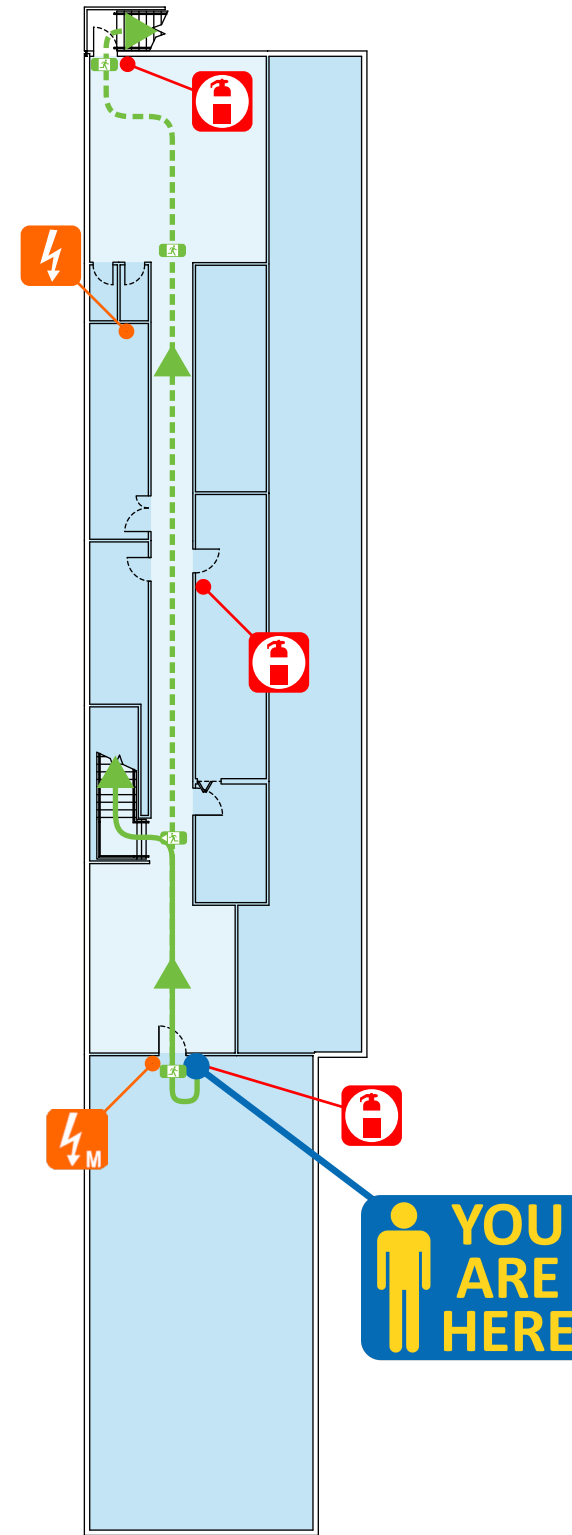
### ALERT PROCEDURE (VERBAL ANNOUNCEMENT)

- / Prepare for Evacuation, gather nearby personal belongings and secure all classified material
- / Ask any visitors to stand-by for possible evacuation
- / Follow instruction from Wardens
- / If in immediate danger, **commence Evacuation**

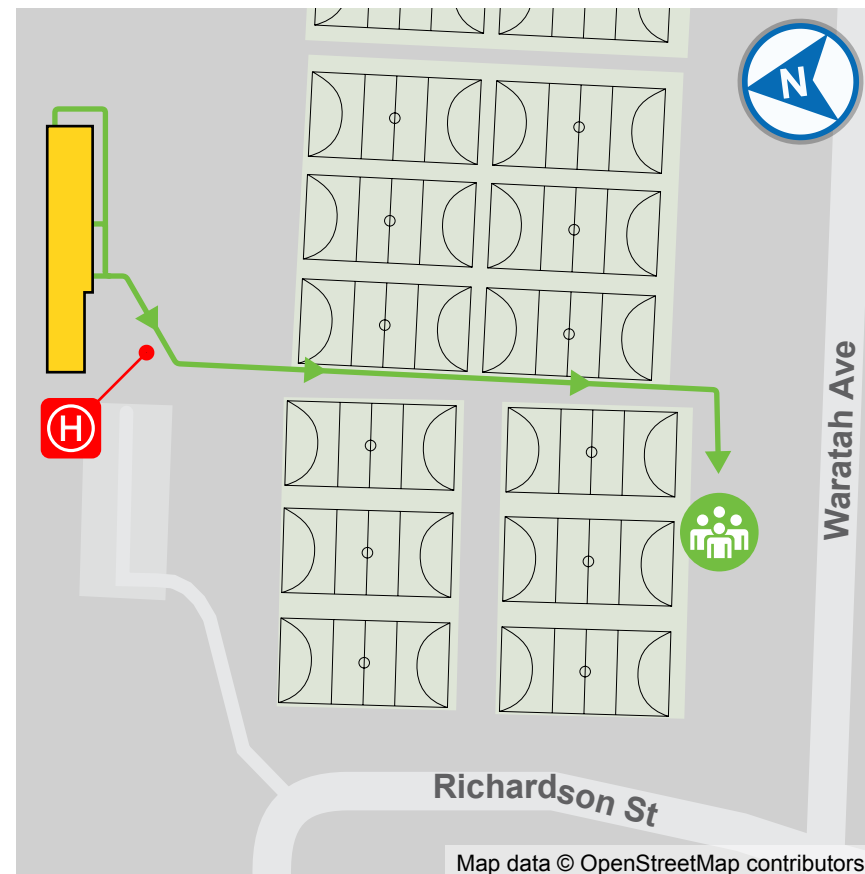
### EVACUATION PROCEDURE (VERBAL ANNOUNCEMENT)

- / Commence Evacuation via the nearest safe **EXIT**
- / Proceed safely to and remain at **Assembly Area**
- / Ensure you are accounted for
- / Do not re-enter building until advised by the Chief Warden or responding emergency services personnel.

## Western District Netball Association - First Floor



## EVACUATION ASSEMBLY AREA



Assembly Area  
 Evacuation Path  
 Alternate Evacuation Path  
 Exit  
 Dry Chemical Extinguisher  
 Hydrant  
 Switchboard  
 Main Switchboard

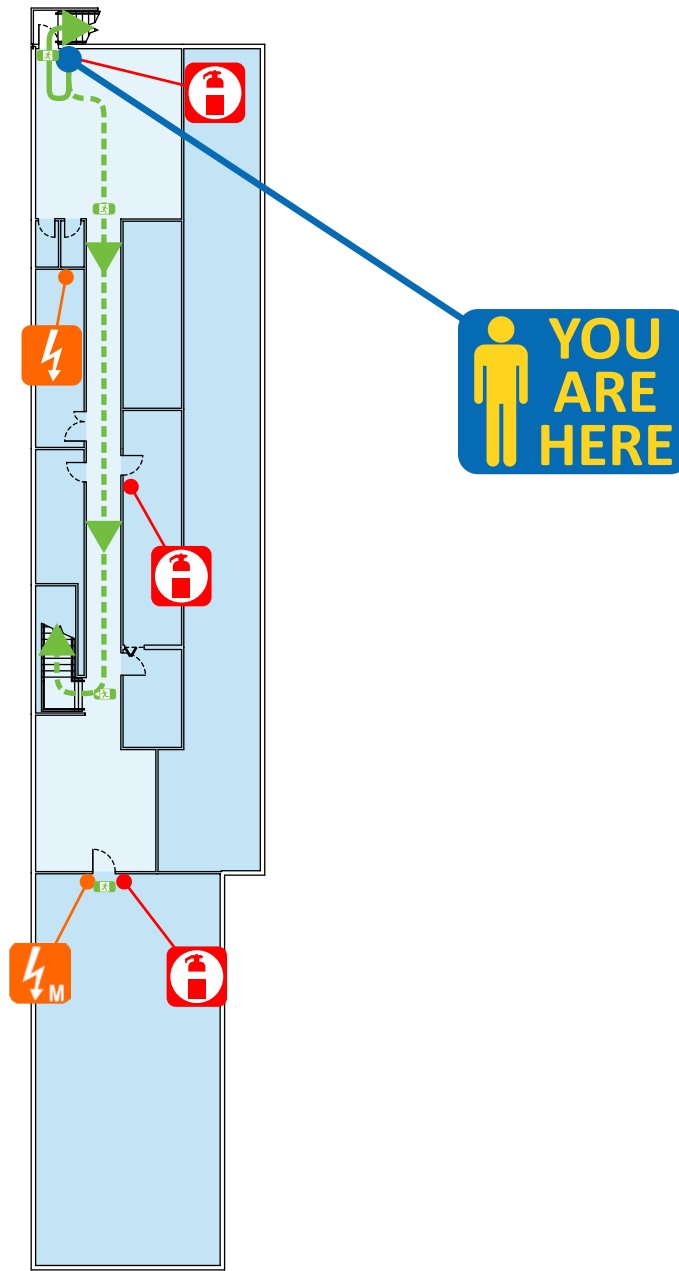


# EVACUATION DIAGRAM

56 Richardson St, Graceville, QLD 4075

Dedicated to a better Brisbane

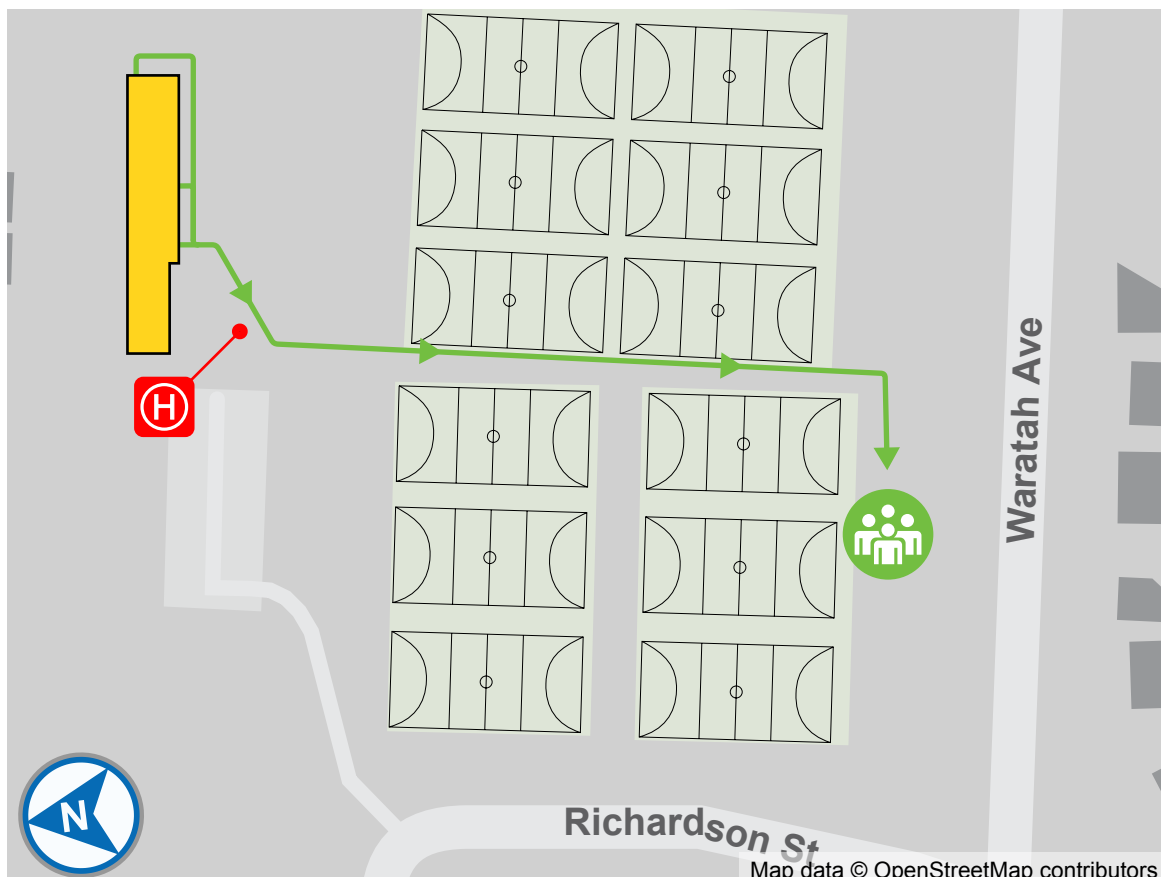
## Western District Netball Association - First Floor



### LEGEND

- Assembly Area
- Evacuation Path
- Alternate Evacuation Path
- Exit
- Dry Chemical Extinguisher
- Hydrant
- Switchboard
- Main Switchboard

### EVACUATION ASSEMBLY AREA



### WHAT TO DO IN AN EMERGENCY

- / Remove yourself & nearby occupants from immediate danger
- / Make a final check of the room and shut the door
- / Raise the alarm, notify the Chief Warden and contact Emergency Services (000).
- / **If Evacuation is required commence Evacuation Procedure**

#### ALERT PROCEDURE (VERBAL ANNOUNCEMENT)

- / Prepare for Evacuation, gather nearby personal belongings and secure all classified material
- / Ask any visitors to stand-by for possible evacuation
- / Follow instruction from Wardens
- / If in immediate danger, **commence Evacuation**

#### EVACUATION PROCEDURE (VERBAL ANNOUNCEMENT)

- / Commence Evacuation via the nearest safe **EXIT**
- / Proceed safely to and remain at **Assembly Area**
- / Ensure you are accounted for
- / Do not re-enter building until advised by the Chief Warden or responding emergency services personnel.



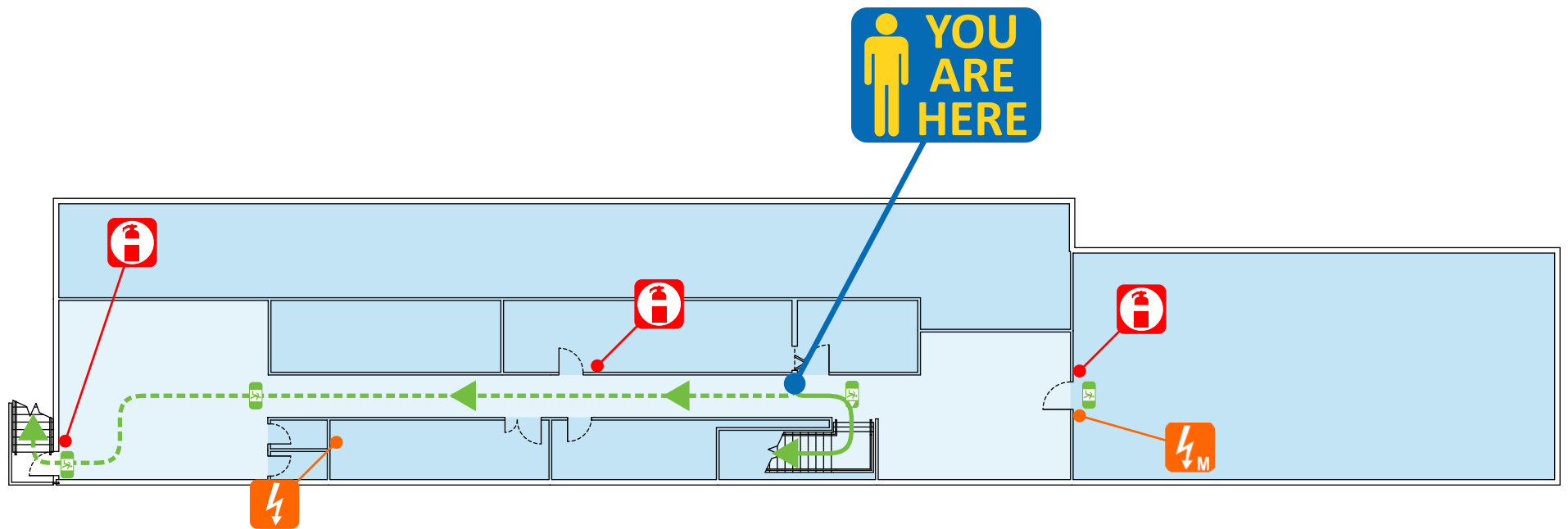


# EVACUATION DIAGRAM

56 Richardson St, Graceville, QLD 4075

Dedicated to a better Brisbane

## Western District Netball Association - First Floor



### LEGEND

- Assembly Area
- Evacuation Path
- Alternate Evacuation Path
- Exit
- Dry Chemical Extinguisher
- Hydrant
- Switchboard
- Main Switchboard

### EVACUATION ASSEMBLY AREA



Map data © OpenStreetMap contributors

### WHAT TO DO IN AN EMERGENCY

- / Remove yourself & nearby occupants from immediate danger
- / Make a final check of the room and shut the door
- / Raise the alarm, notify the Chief Warden and contact Emergency Services (000).
- / **If Evacuation is required commence Evacuation Procedure**

#### ALERT PROCEDURE (VERBAL ANNOUNCEMENT)

- / Prepare for Evacuation, gather nearby personal belongings and secure all classified material
- / Ask any visitors to stand-by for possible evacuation
- / Follow instruction from Wardens
- / If in immediate danger, **commence Evacuation**

#### EVACUATION PROCEDURE (VERBAL ANNOUNCEMENT)

- / Commence Evacuation via the nearest safe **EXIT**
- / Proceed safely to and remain at **Assembly Area**
- / Ensure you are accounted for
- / Do not re-enter building until advised by the Chief Warden or responding emergency services personnel.





Dedicated to a better Brisbane

# EVACUATION DIAGRAM

56 Richardson St, Graceville, QLD 4075

## WHAT TO DO IN AN EMERGENCY

- / Remove yourself & nearby occupants from immediate danger
- / Make a final check of the room and shut the door
- / Raise the alarm, notify the Chief Warden and contact Emergency Services (000).
- / **If Evacuation is required commence Evacuation Procedure**

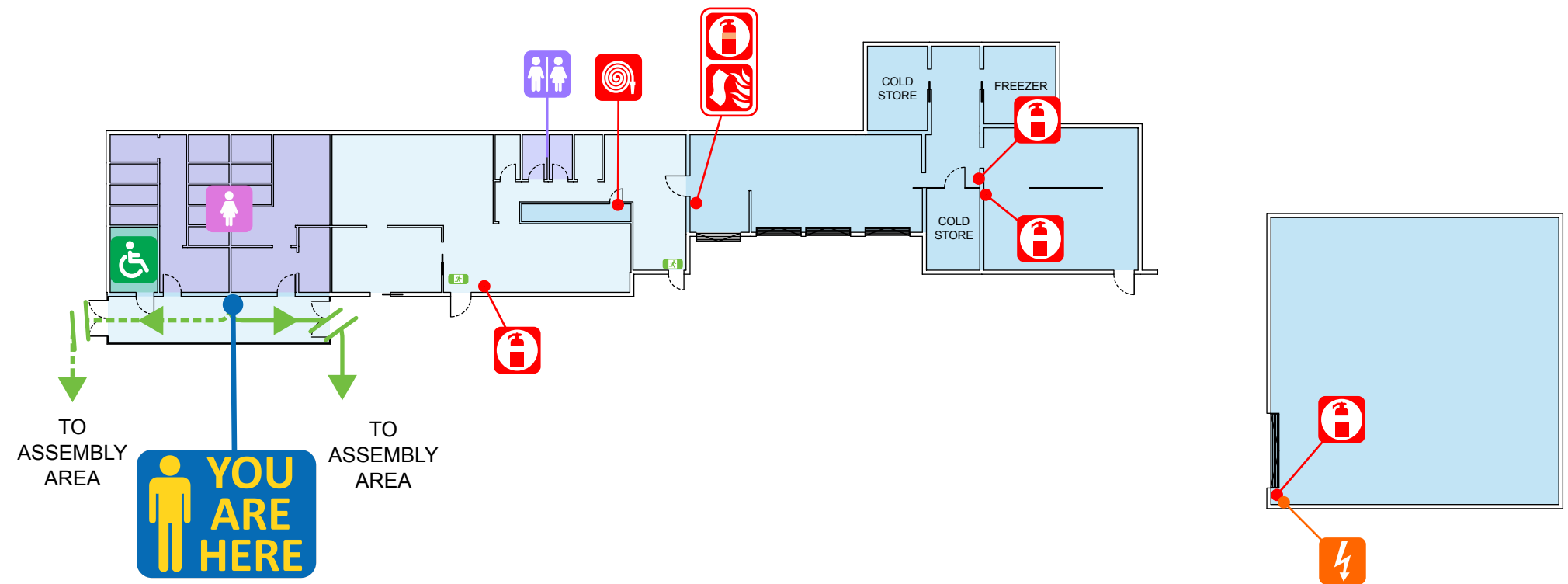
### ALERT PROCEDURE (VERBAL ANNOUNCEMENT)

- / Prepare for Evacuation, gather nearby personal belongings and secure all classified material
- / Ask any visitors to stand-by for possible evacuation
- / Follow instruction from Wardens
- / If in immediate danger, **commence Evacuation**

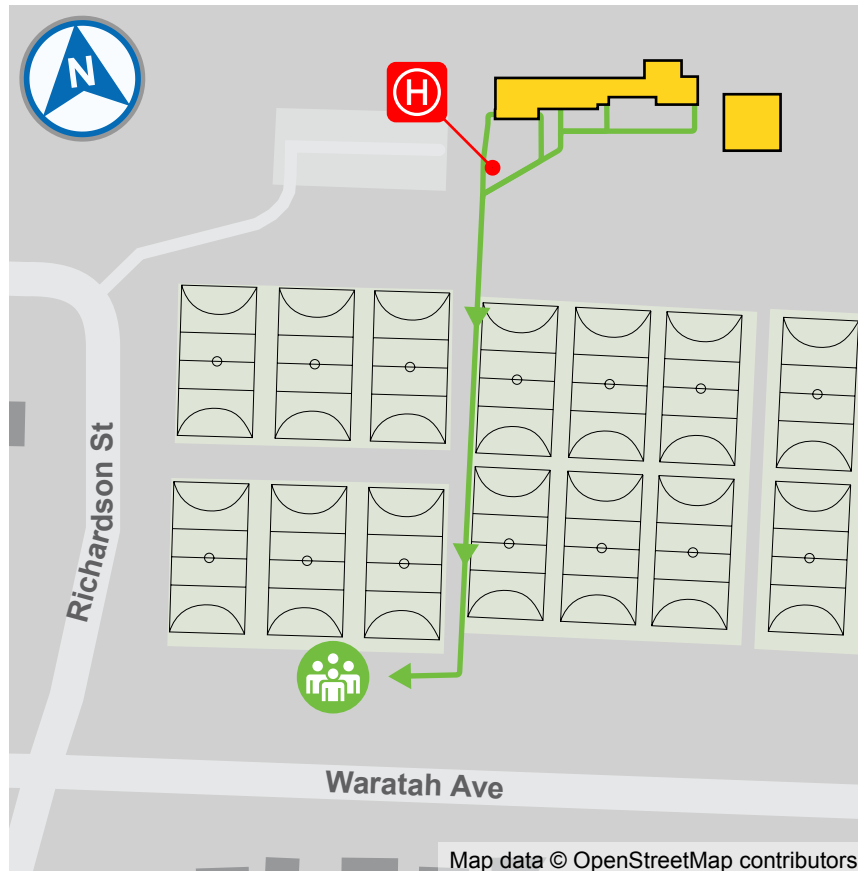
### EVACUATION PROCEDURE (VERBAL ANNOUNCEMENT)

- / Commence Evacuation via the nearest safe **EXIT**
- / Proceed safely to and remain at **Assembly Area**
- / Ensure you are accounted for
- / Do not re-enter building until advised by the Chief Warden or responding emergency services personnel.

## Western District Netball Association - Ground



## EVACUATION ASSEMBLY AREA



Assembly Area	Evacuation Path	Alternate Evacuation Path	Exit	Amenities Accessible	Amenities Female
Unisex Amenities	Dry Chemical Extinguisher	Wet Chemical Extinguisher	Fire Blanket	Hose Reel	Hydrant
				Switchboard	

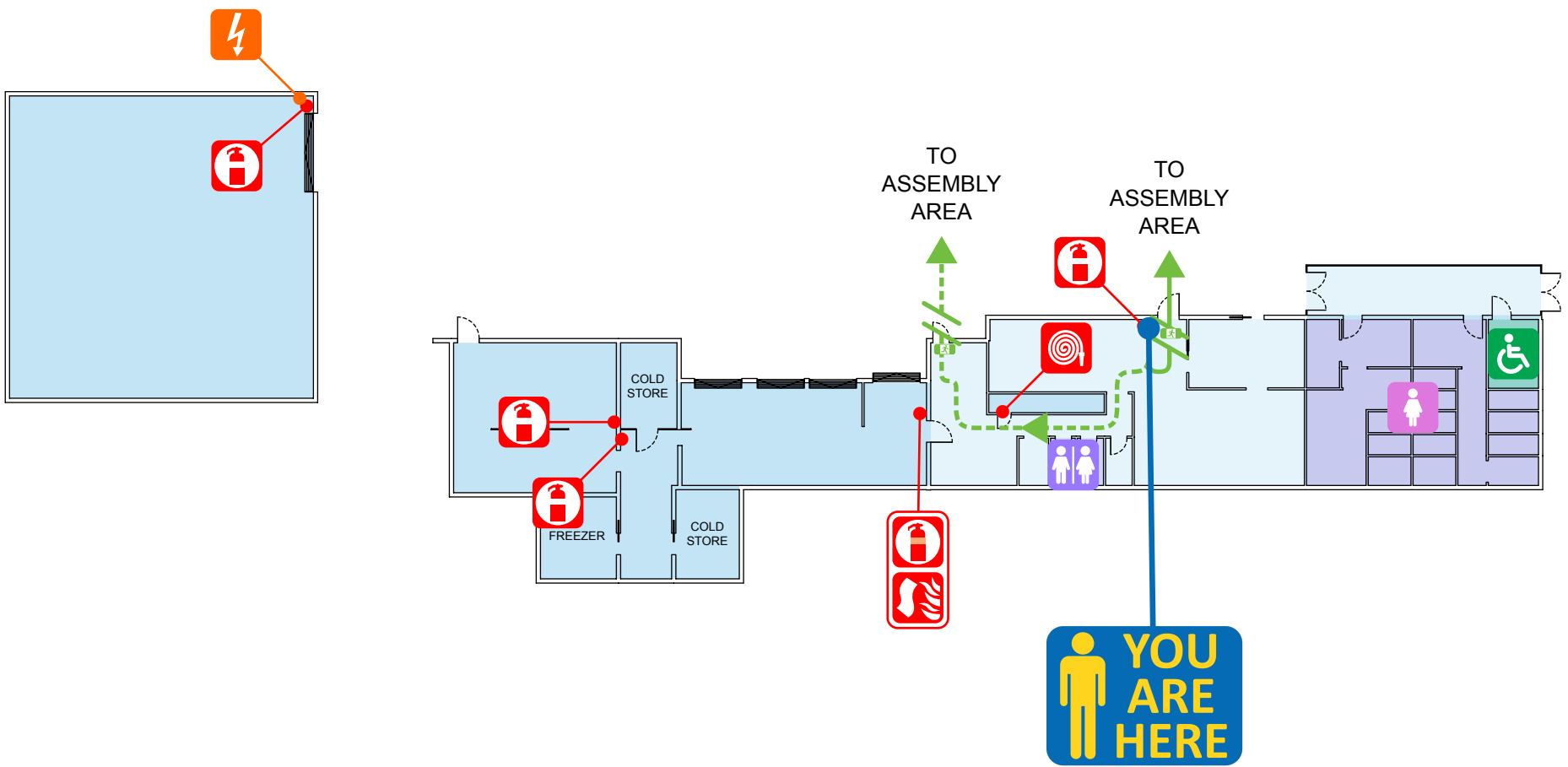


# EVACUATION DIAGRAM

56 Richardson St, Graceville, QLD 4075

Dedicated to a better Brisbane

## Western District Netball Association - Ground



### LEGEND

	Assembly Area		Evacuation Path		Alternate Evacuation Path		Exit		Amenities Accessible		Amenities Female		
	Unisex Amenities		Dry Chemical Extinguisher		Wet Chemical Extinguisher		Fire Blanket		Hose Reel		Hydrant		Switchboard

### EVACUATION ASSEMBLY AREA



### WHAT TO DO IN AN EMERGENCY

- / Remove yourself & nearby occupants from immediate danger
- / Make a final check of the room and shut the door
- / Raise the alarm, notify the Chief Warden and contact Emergency Services (000).
- / **If Evacuation is required commence Evacuation Procedure**

#### ALERT PROCEDURE (VERBAL ANNOUNCEMENT)

- / Prepare for Evacuation, gather nearby personal belongings and secure all classified material
- / Ask any visitors to stand-by for possible evacuation
- / Follow instruction from Wardens
- / If in immediate danger, **commence Evacuation**

#### EVACUATION PROCEDURE (VERBAL ANNOUNCEMENT)

- / Commence Evacuation via the nearest safe **EXIT**
- / Proceed safely to and remain at **Assembly Area**
- / Ensure you are accounted for
- / Do not re-enter building until advised by the Chief Warden or responding emergency services personnel.





Dedicated to a better Brisbane

# EVACUATION DIAGRAM

56 Richardson St, Graceville, QLD 4075

## WHAT TO DO IN AN EMERGENCY

- / Remove yourself & nearby occupants from immediate danger
- / Make a final check of the room and shut the door
- / Raise the alarm, notify the Chief Warden and contact Emergency Services (000).
- / **If Evacuation is required commence Evacuation Procedure**

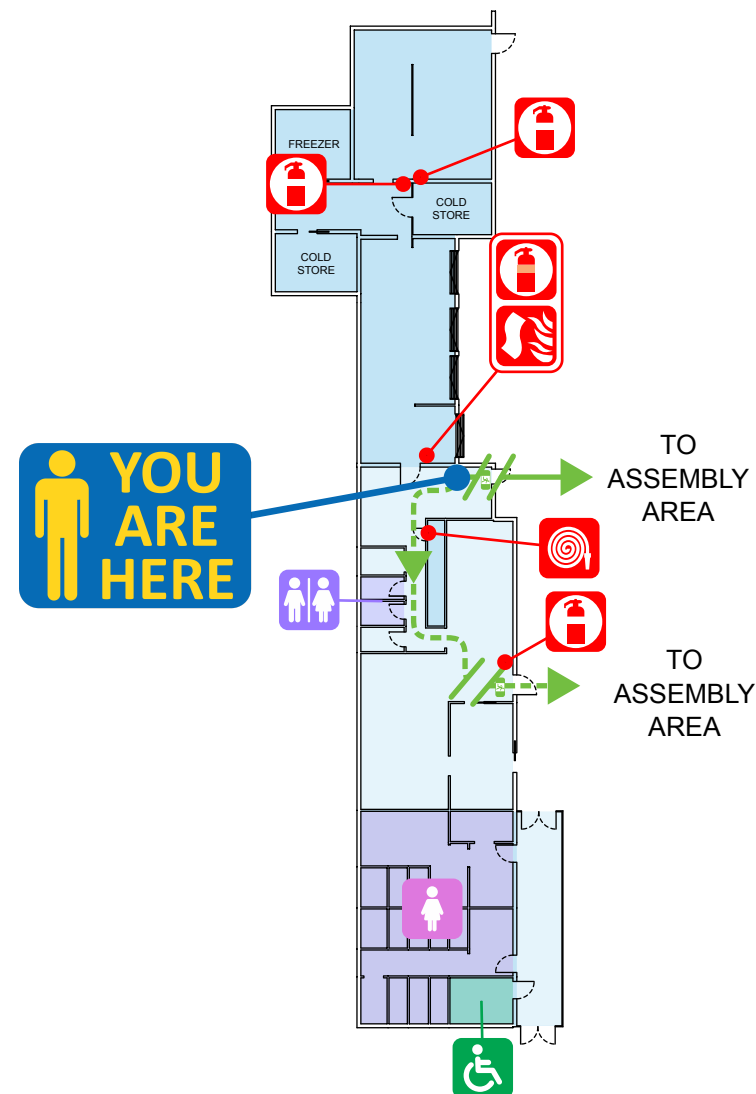
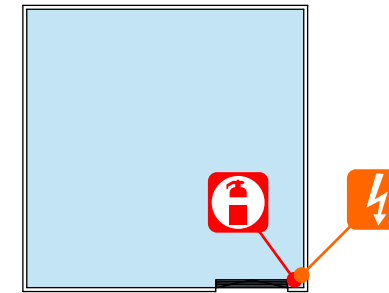
### ALERT PROCEDURE (VERBAL ANNOUNCEMENT)

- / Prepare for Evacuation, gather nearby personal belongings and secure all classified material
- / Ask any visitors to stand-by for possible evacuation
- / Follow instruction from Wardens
- / If in immediate danger, **commence Evacuation**

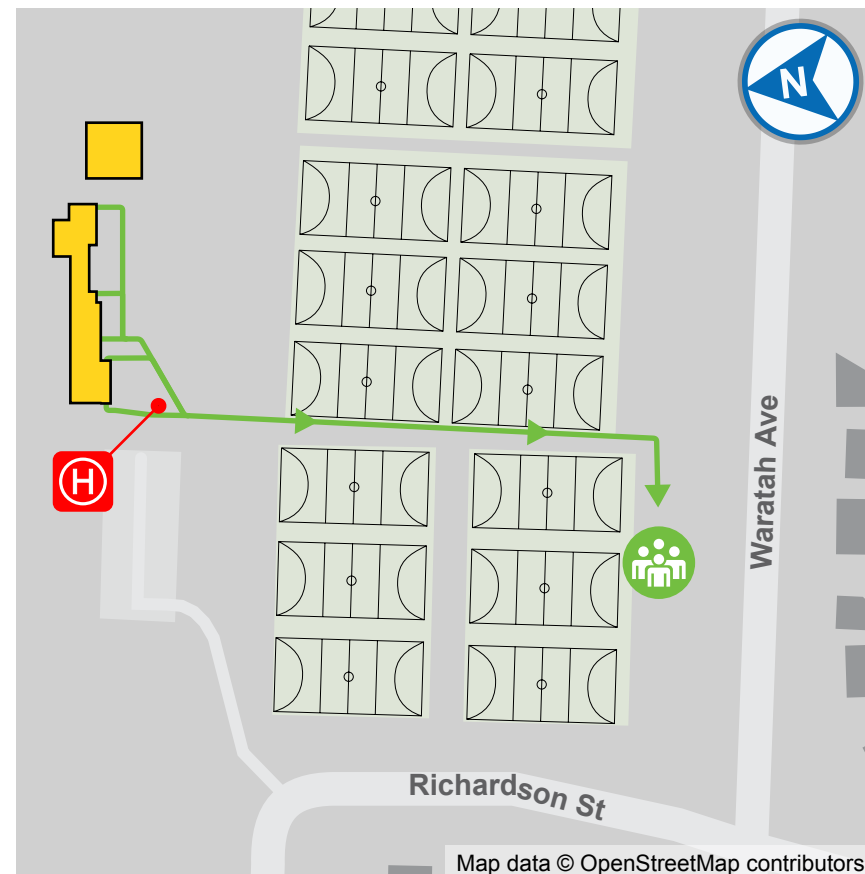
### EVACUATION PROCEDURE (VERBAL ANNOUNCEMENT)

- / Commence Evacuation via the nearest safe **EXIT**
- / Proceed safely to and remain at **Assembly Area**
- / Ensure you are accounted for
- / Do not re-enter building until advised by the Chief Warden or responding emergency services personnel.

## Western District Netball Association - Ground



## EVACUATION ASSEMBLY AREA



Assembly Area	Evacuation Path	Alternate Evacuation Path	Exit	Amenities Accessible	Amenities Female
Unisex Amenities	Dry Chemical Extinguisher	Wet Chemical Extinguisher	Fire Blanket	Hose Reel	Hydrant
				Switchboard	



Dedicated to a better Brisbane

# EVACUATION DIAGRAM

56 Richardson St, Graceville, QLD 4075

## WHAT TO DO IN AN EMERGENCY

- / Remove yourself & nearby occupants from immediate danger
- / Make a final check of the room and shut the door
- / Raise the alarm, notify the Chief Warden and contact Emergency Services (000).
- / **If Evacuation is required commence Evacuation Procedure**

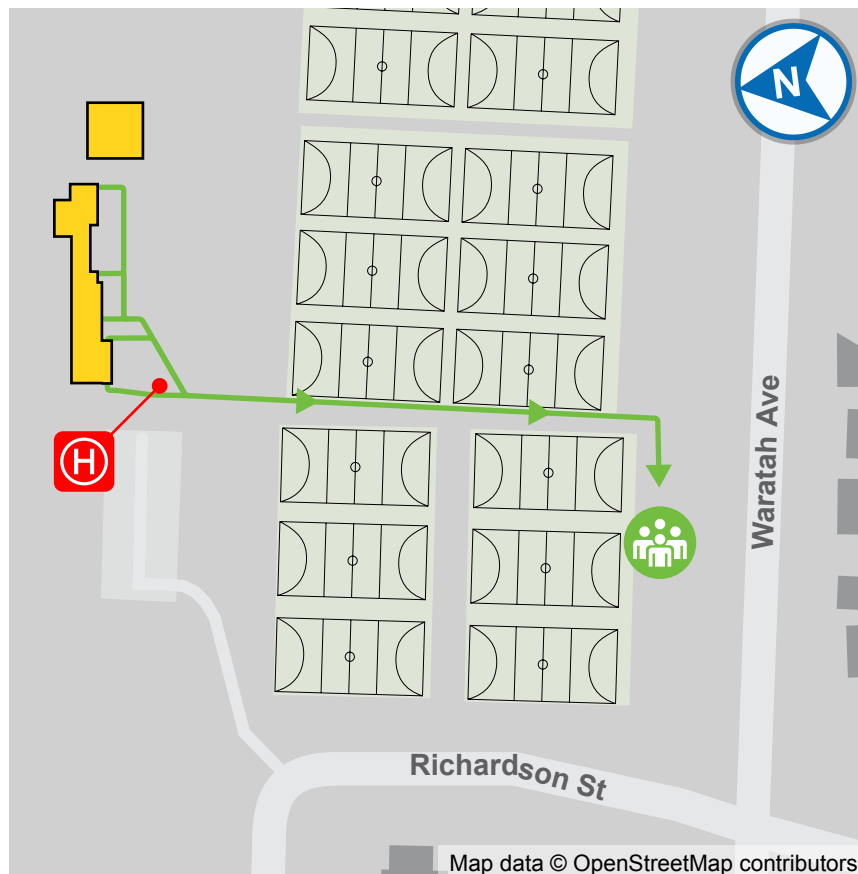
### ALERT PROCEDURE (VERBAL ANNOUNCEMENT)

- / Prepare for Evacuation, gather nearby personal belongings and secure all classified material
- / Ask any visitors to stand-by for possible evacuation
- / Follow instruction from Wardens
- / If in immediate danger, **commence Evacuation**

### EVACUATION PROCEDURE (VERBAL ANNOUNCEMENT)

- / Commence Evacuation via the nearest safe **EXIT**
- / Proceed safely to and remain at **Assembly Area**
- / Ensure you are accounted for
- / Do not re-enter building until advised by the Chief Warden or responding emergency services personnel.

## EVACUATION ASSEMBLY AREA



## Western District Netball Association - Ground



Assembly Area	Evacuation Path	Exit	Amenities Accessible	Amenities Female	Unisex Amenities
Dry Chemical Extinguisher	Wet Chemical Extinguisher	Fire Blanket	Hose Reel	Hydrant	Switchboard