

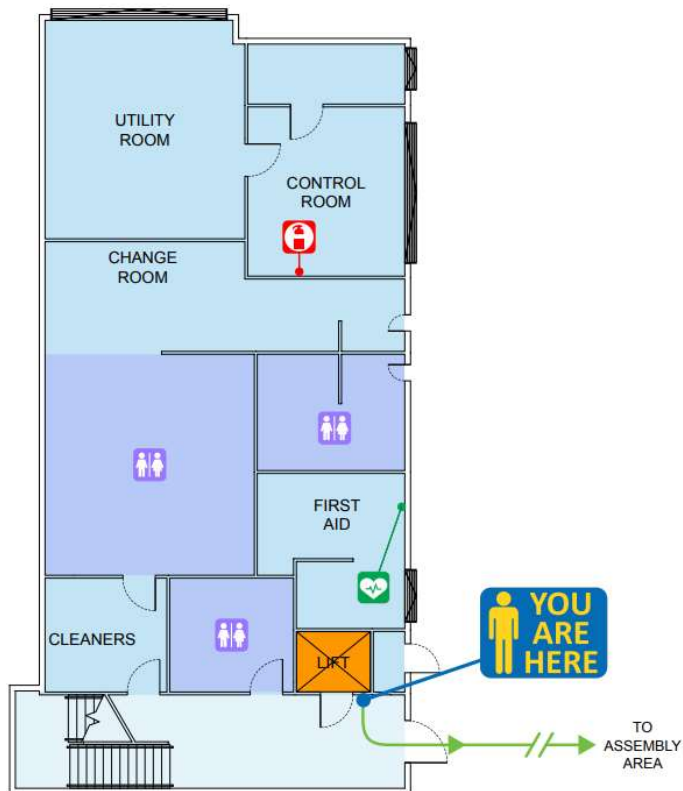


# EVACUATION DIAGRAM

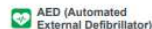
9 Green Terrace, Windsor, QLD 4030

Dedicated to a better Brisbane

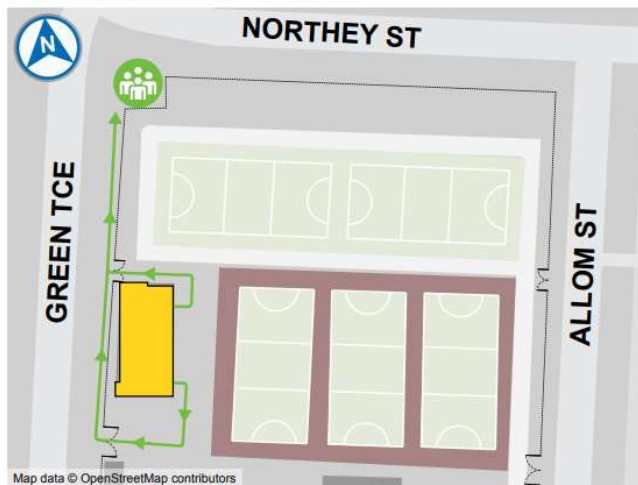
## Downey Park Netball Association Inc - Ground Floor



### LEGEND



### EVACUATION ASSEMBLY AREA



Map data © OpenStreetMap contributors

### WHAT TO DO IN AN EMERGENCY

- / Remove yourself & nearby occupants from immediate danger
- / Make a final check of the room and shut the door
- / Raise the alarm, notify the Chief Warden and contact Emergency Services (000).
- / **If Evacuation is required commence Evacuation Procedure**

#### ALERT PROCEDURE (VERBAL ANNOUNCEMENT)

- / Prepare for Evacuation, gather nearby personal belongings and secure all classified material
- / Ask any visitors to stand-by for possible evacuation
- / Follow instruction from Wardens
- / If in immediate danger, **commence Evacuation**

#### EVACUATION PROCEDURE (VERBAL ANNOUNCEMENT)

- / Commence Evacuation via the nearest safe **EXIT**
- / Proceed safely to and remain at **Assembly Area**
- / **DO NOT** use Lifts
- / Ensure you are accounted for
- / Do not re-enter building until advised by the Chief Warden or responding emergency services personnel.



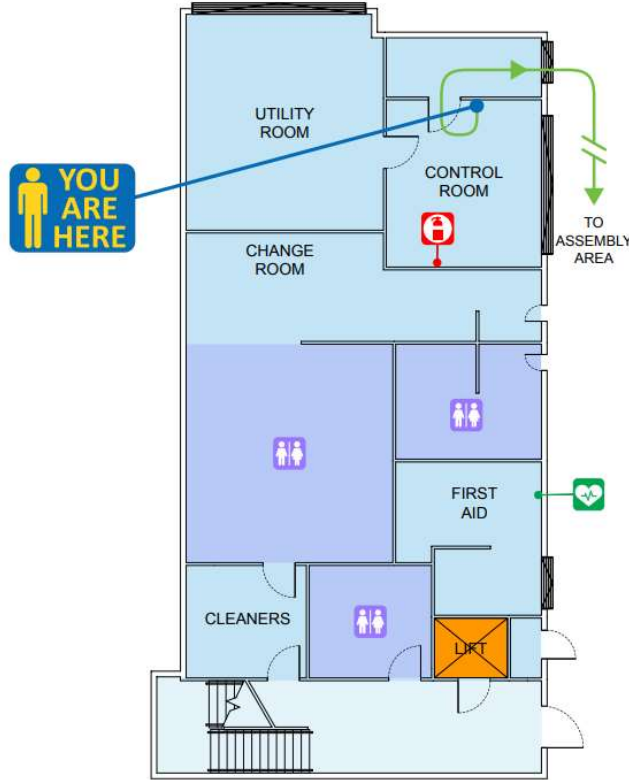


# EVACUATION DIAGRAM

9 Green Terrace, Windsor, QLD 4030

Dedicated to a better Brisbane

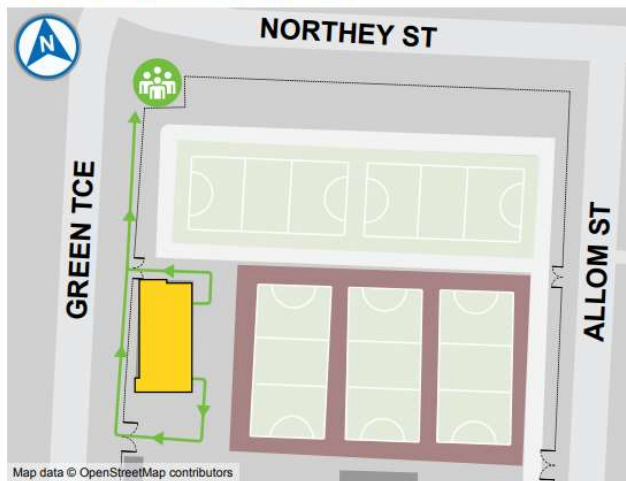
## Downey Park Netball Association Inc - Ground Floor



### LEGEND



### EVACUATION ASSEMBLY AREA



### WHAT TO DO IN AN EMERGENCY

- / Remove yourself & nearby occupants from immediate danger
- / Make a final check of the room and shut the door
- / Raise the alarm, notify the Chief Warden and contact Emergency Services (000).
- / **If Evacuation is required commence Evacuation Procedure**

### ALERT PROCEDURE (VERBAL ANNOUNCEMENT)

- / Prepare for Evacuation, gather nearby personal belongings and secure all classified material
- / Ask any visitors to stand-by for possible evacuation
- / Follow instruction from Wardens
- / If in immediate danger, **commence Evacuation**

### EVACUATION PROCEDURE (VERBAL ANNOUNCEMENT)

- / Commence Evacuation via the nearest safe **EXIT**
- / Proceed safely to and remain at **Assembly Area**
- / **DO NOT** use Lifts
- / Ensure you are accounted for
- / Do not re-enter building until advised by the Chief Warden or responding emergency services personnel.



SIGN Ref: AG - YAH - G01

Issue Date: 05/2023

Review Date: 05/2028

1800 875 371 | www.Hendry.com.au



Dedicated to a better Brisbane

# EVACUATION DIAGRAM

9 Green Terrace, Windsor, QLD 4030

## Downey Park Netball Association Inc - Level 1

### WHAT TO DO IN AN EMERGENCY

- Remove yourself & nearby occupants from immediate danger
- Make a final check of the room and shut the door
- Raise the alarm, notify the Chief Warden and contact Emergency Services (000).
- If Evacuation is required commence Evacuation Procedure**

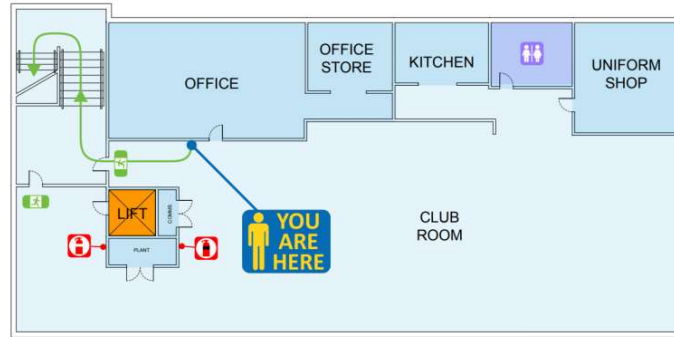
### ALERT PROCEDURE (VERBAL ANNOUNCEMENT)

- Prepare for Evacuation, gather nearby personal belongings and secure all classified material
- Ask any visitors to stand-by for possible evacuation
- Follow instruction from Wardens
- If in immediate danger, commence **Evacuation**

### EVACUATION PROCEDURE (VERBAL ANNOUNCEMENT)

- Commence Evacuation via the nearest safe **EXIT**
- Proceed safely to and remain at **Assembly Area**
- DO NOT** use Lifts
- Ensure you are accounted for
- Do not re-enter building until advised by the Chief Warden or responding emergency services personnel.

### EVACUATION ASSEMBLY AREA GREEN TCE



SIGN Ref: AG - YAH - L102

Issue Date: 05/2023

Review Date: 05/2028

1800 875 371 | www.Hendry.com.au

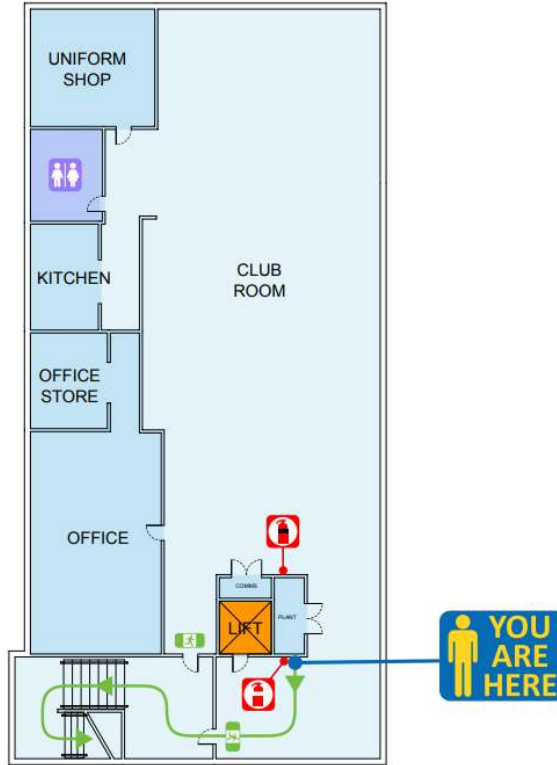


# EVACUATION DIAGRAM

9 Green Terrace, Windsor, QLD 4030

Dedicated to a better Brisbane

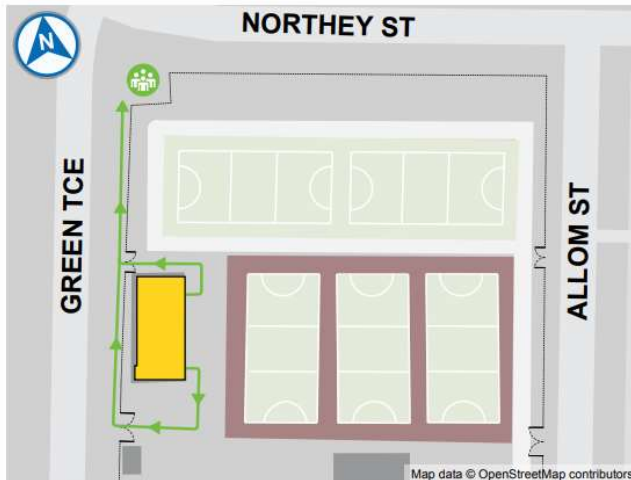
## Downey Park Netball Association Inc - Level 1



### LEGEND



### EVACUATION ASSEMBLY AREA



### WHAT TO DO IN AN EMERGENCY

- / Remove yourself & nearby occupants from immediate danger
- / Make a final check of the room and shut the door
- / Raise the alarm, notify the Chief Warden and contact Emergency Services (000).
- / **If Evacuation is required commence Evacuation Procedure**

#### ALERT PROCEDURE (VERBAL ANNOUNCEMENT)

- / Prepare for Evacuation, gather nearby personal belongings and secure all classified material
- / Ask any visitors to stand-by for possible evacuation
- / Follow instruction from Wardens
- / If in immediate danger, **commence Evacuation**

#### EVACUATION PROCEDURE (VERBAL ANNOUNCEMENT)

- / Commence Evacuation via the nearest safe **EXIT**
- / Proceed safely to and remain at **Assembly Area**
- / **DO NOT** use Lifts
- / Ensure you are accounted for
- / Do not re-enter building until advised by the Chief Warden or responding emergency services personnel.



